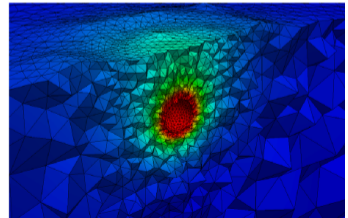
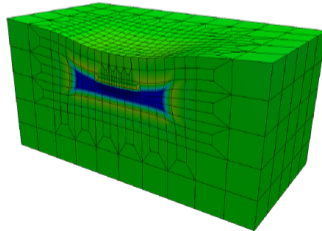
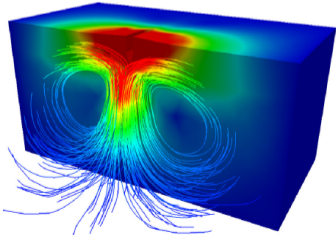
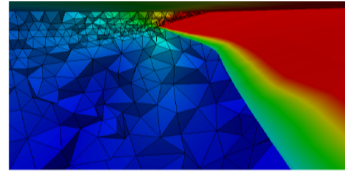
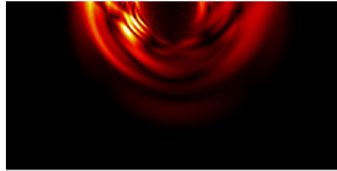
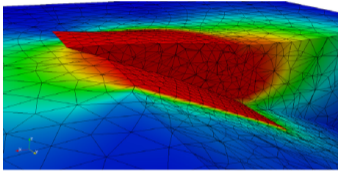


# Defmod<sup>1</sup>: Finite element code for modeling crustal deformation

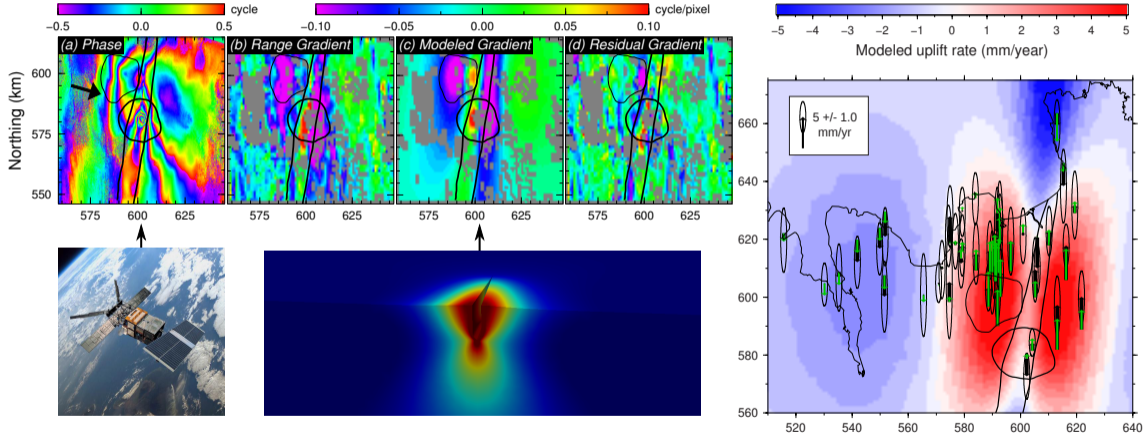
Tabrez Ali (University of Wisconsin-Madison)



<sup>1</sup><https://bitbucket.org/stali/defmod>

# Applications

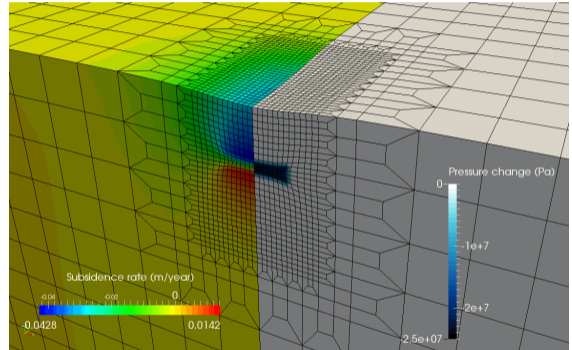
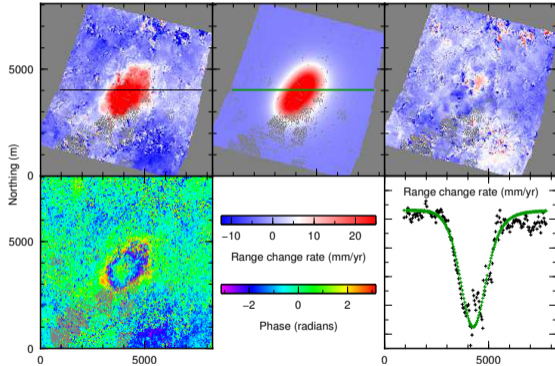
E.g., To model deformation due post-rifting viscoelastic relaxation



[Ali et al., Geophy. J. Int., 2014]

# Applications

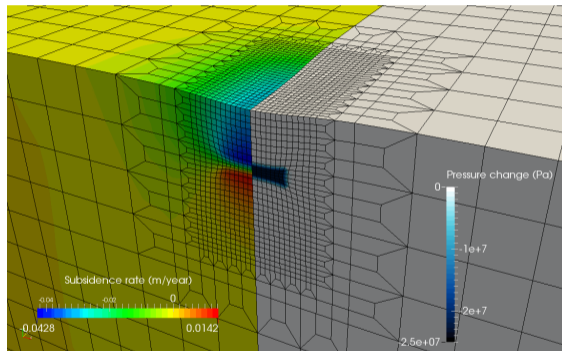
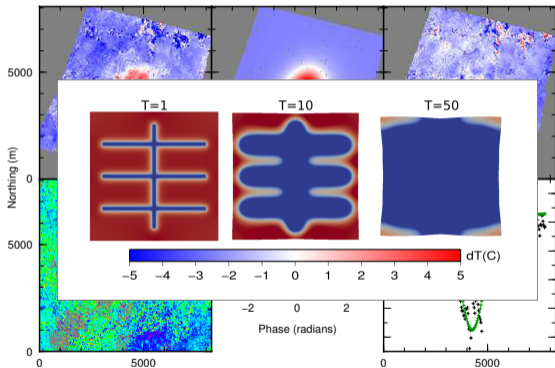
E.g., To model deformation due to extraction of fluids from poroelastic media



[Ali et al., Unpublished report]

# Applications

E.g., To model deformation due to extraction of fluids from poroelastic media



[Ali et al., Unpublished report]